

The approach to transport and logistics accessibility: the MATAARI project

Alberto Preti, Regione Emilia-Romagna

albertopreti@libero.it

Port  Net

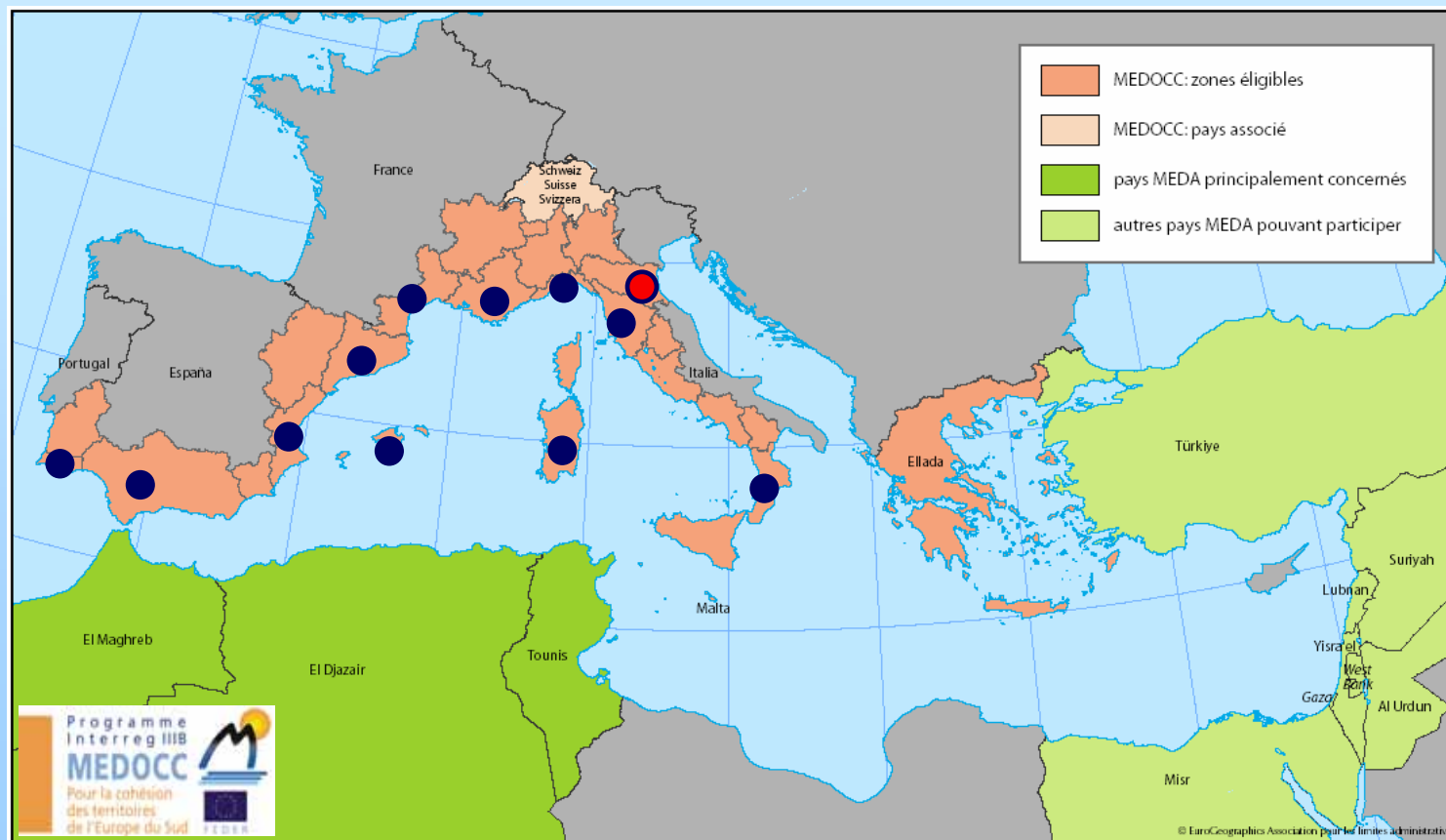
Ravenna, April 6th 2006

WS 03-11

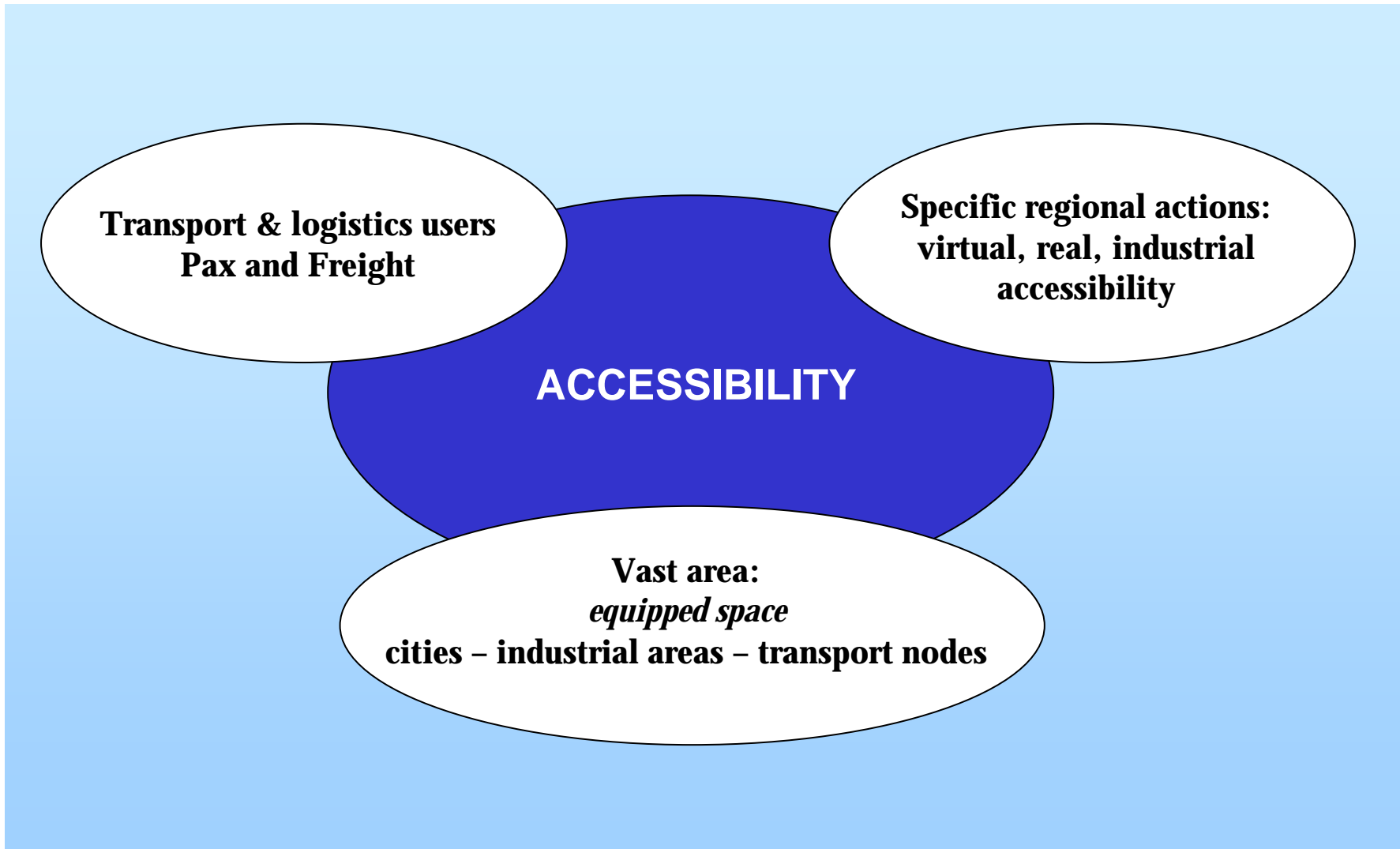


PROJECT OVERVIEW

iMprovement of Accessibility to Transport And logistic services Among uRban areas and Intermodal centres

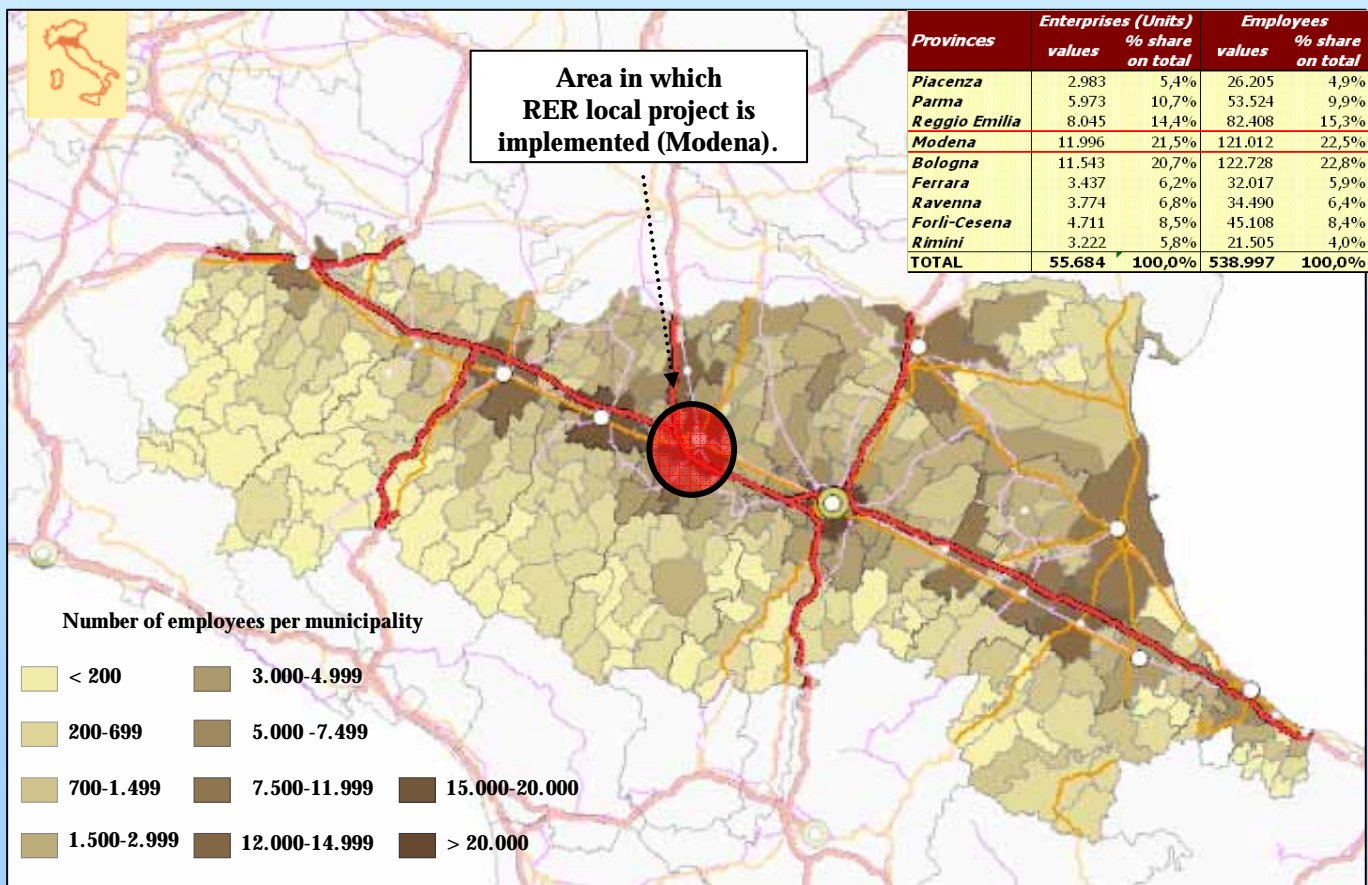


APPROACH



OPERATIVE ACTION

IMPROVEMENT OF TRANSPORT AND LOGISTICS ACCESSIBILITY IN ONE INDUSTRIAL AREA

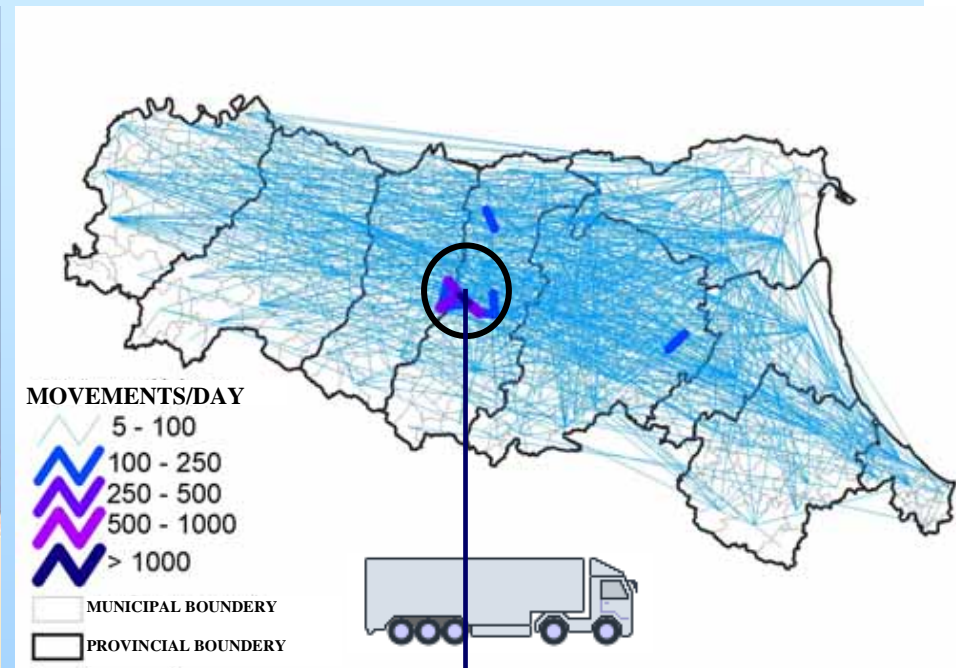
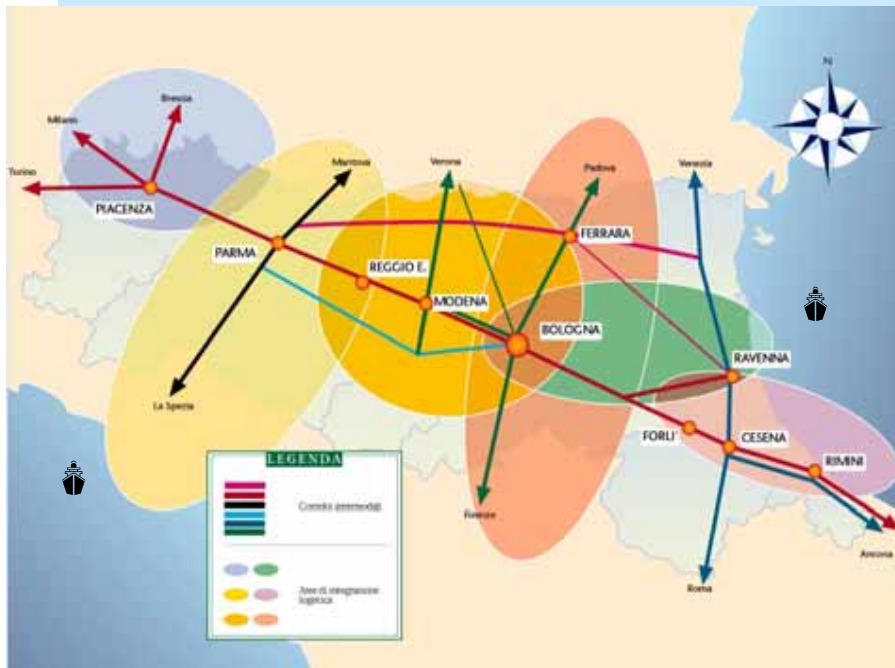


Source: Regione Emilia-Romagna - Transport Planning and Logistics Department

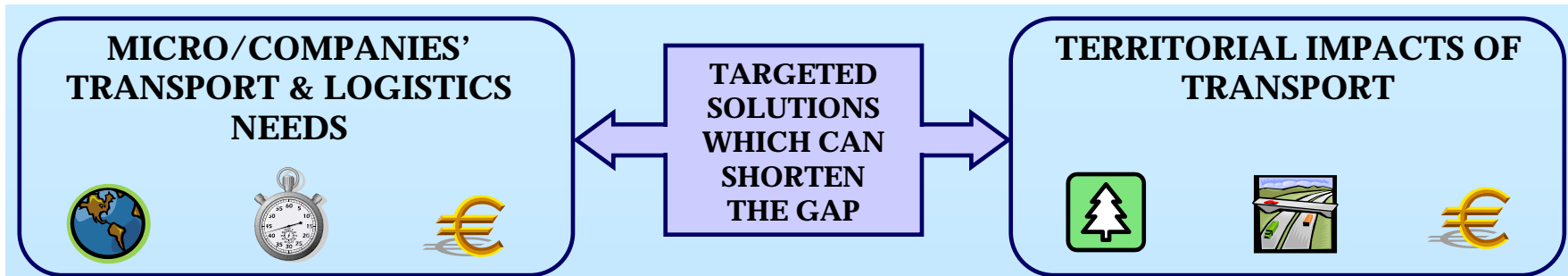


PERSPECTIVE

ACTUAL



 **ADDRESSING THE GENERATORS OF FREIGHT TRAFFIC: *COMPANIES***



COOPERATION AMONG SETTLED COMPANIES

- Joint buying and planning of transport & logistics services (economies of scale)
- Groupage on short-medium and long distance (multi-modal transport solutions)
- Common warehousing
- Sharing added value logistics services (quality control, assembling, packaging, ...)

LOGISTICS GUIDELINES FOR SETTLING NEW COMPANIES

- Concentration of the supply chain in the industrial area (max. internal flows)
- Choosing the companies which can and want to share transport and logistic services
- Equipping the industrial area with transport and logistic services



EASY METHODOLOGICAL APPROACH AND OPERATIONAL WORK PLAN

- Involvement of companies – showing the benefits and the duties in the participation
TRANSPARENCY & TRUST (via the Associations of Enterprises and the industrial area managing body)

- Data collection – standard information from companies' IT systems
SIMPLE DATA & ONE TO ONE MEETINGS

- Simulation on the base of origins/destinations, frequencies, transport tariffs, volumes (...) and savings determination
SOLUTIONS PROPOSAL & COMPANIES AGREEMENT
NEW COMPANIES SETTLEMENT GUIDELINES

- Operative test
SUSTAINABILITY IN THE LONG TERM